

The background is a vibrant blue abstract image featuring a grid or mesh pattern that creates a sense of depth and movement. The grid lines are more pronounced in some areas, creating a 3D effect. The overall color palette is various shades of blue, from deep navy to bright cyan.

CLEANROOM CONSTRUCTION [+] [0] [0]

净化工程

公司简介

新丰行，是制造一次性的医疗及保健防护产品的一间专业公司。我们的产品多广泛应用于医疗保健，美容，食品加工及无尘室使用。

由于我们有丰富的经验在制造这些产品，使我们有更强的能力在开拓新产品的市场，除此之外，我们亦以顾客需求的规格而生产。高质量是我们做生意持久稳固的政策。

我们的产品在 1998 年已通过了各种专业试验和我们工厂在高级的制度方面获得 ISO9001 证书。我们目标是生产最好及高质量的产品及符合工业标准。

我们的目标是领导市场，我们的效率及合作态度已被顾客认同了，并且我们诚实可靠已获得良好名誉。这促进我们到达了目标并且成为了所有新丰行职员的基本原则。

我们期望与你携手合作，并一起以相互的好处发展更美好的市场。

COMPANY PROFILE

New Growth Co., is a professional company in manufacturing disposable medical and health care protective products. Our products is available for a very wide range of medical and health care uses. A wealth of experience in manufacturing these products enables us to have strong capabilities in exploring new products for the market, besides the way of producing as customer's specifications.

High quality is our persistent policy of doing business. Our products has passed various professional tests and our factory in 1998 obtained the ISO9001 certificate in quality system. We are confident in our capabilities of making perfect the quality of our products, with destination to accord with industrial standard, and it is also our responsibility.

It is always our goal to be the leader in the market place, our cooperative attitude has been recognized through working with our customers, and our honesty has enabled us to obtain a good reputation among them. This facilitates us to reach our target and it has become the basic principle of all our staff.

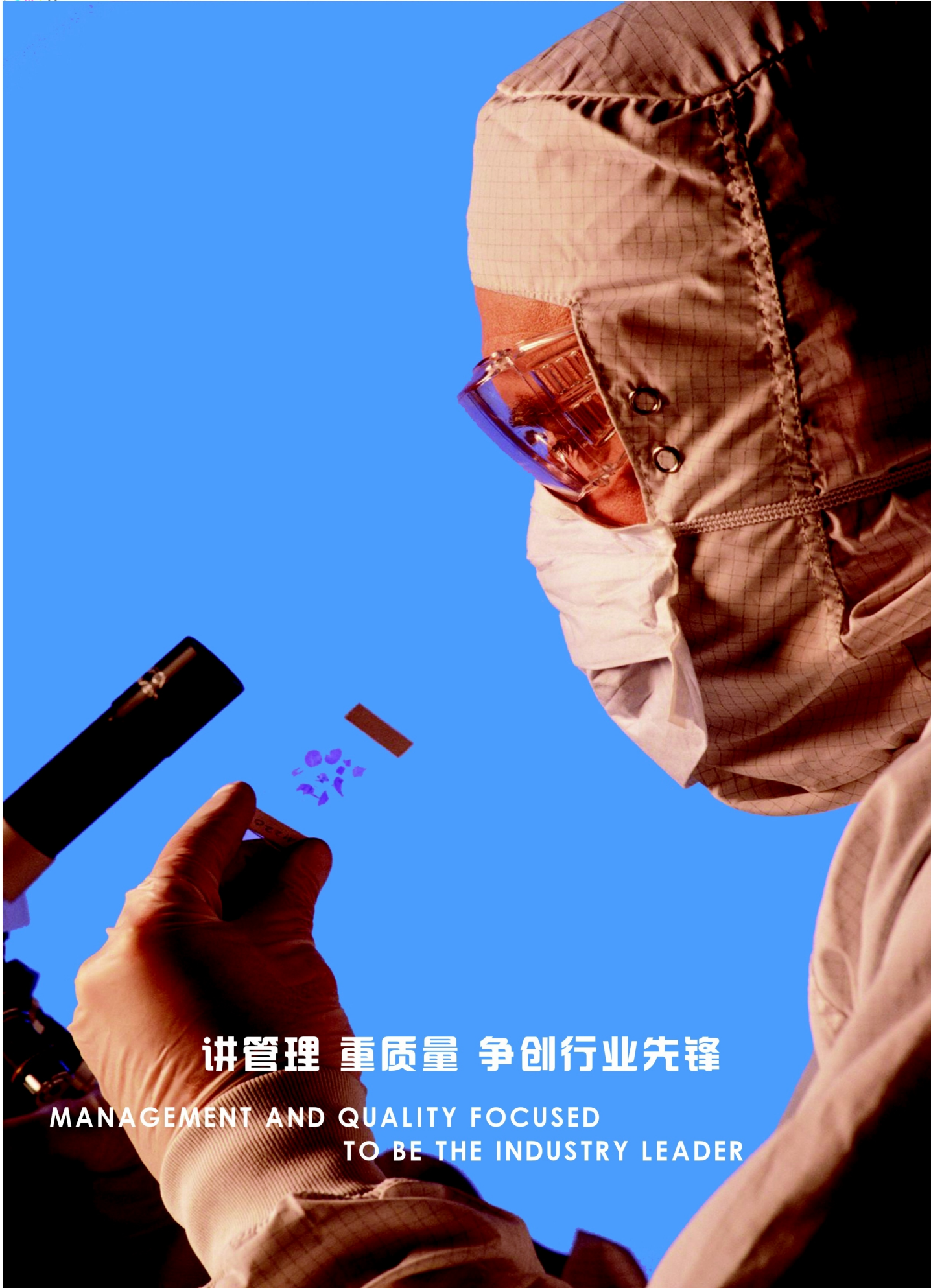
We are expecting to working with you to develop together & more market share with mutual benefit.

公司简介

COMPANY PROFILE



ISO9001 认证企业



讲管理 重质量 争创行业先锋

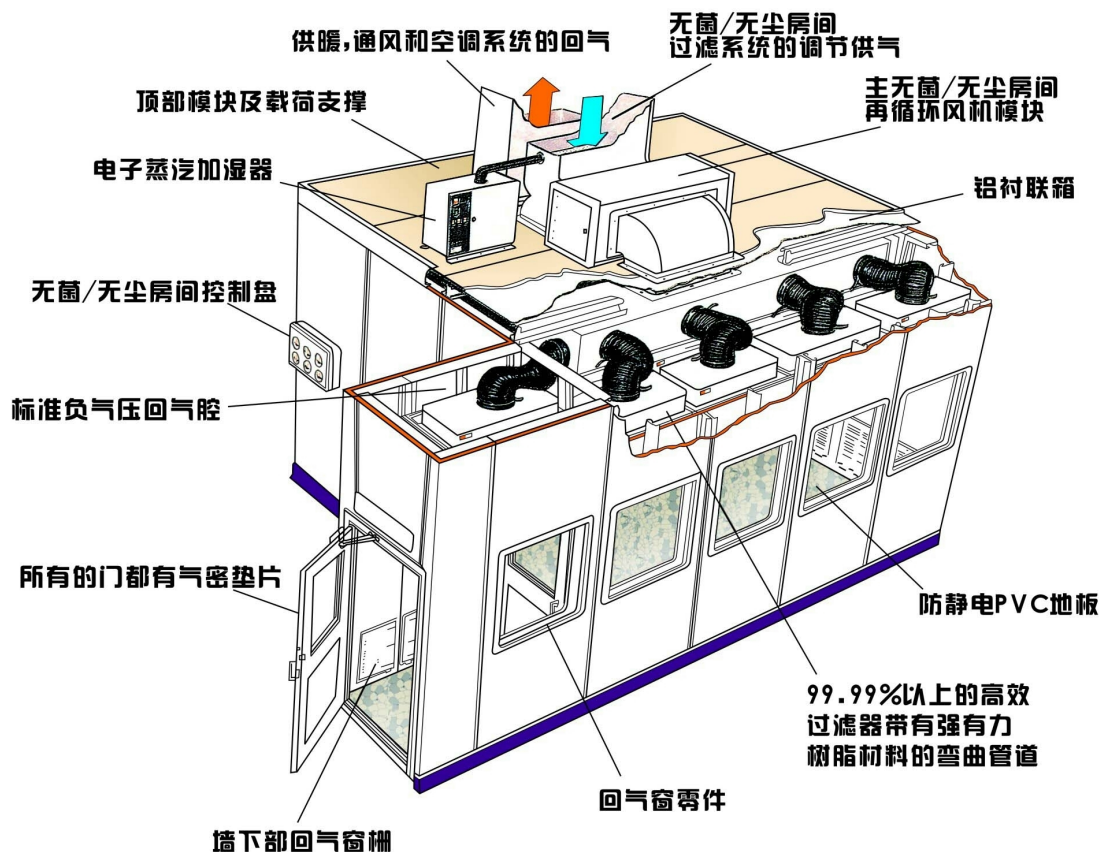
**MANAGEMENT AND QUALITY FOCUSED
TO BE THE INDUSTRY LEADER**

新丰行目前拥有近10人的设计工程师团队，专业洁净安装队两支，可按美国联邦FS209E标准、ISO14644-1标准及国家标准GB50073规范要求，为微电子，光纤光缆，精密机械，光学仪器，食品饮料，航空航天和科研教学等行业提供空气净化工程的设计、制造、安装、调试检测等综合性成套服务。

公司设有专业的“CAD”计算机辅助设计室。拥有一支专门从事工程设计制造、净化产品开发、研制、施工安装的高素质工程技术队伍。公司以创新为主导，以科研为动力，以现代管理为保障。严格执行ISO9001质量体系标准，无论从图纸设计、工程计划、工程材料采购还是到每个制造、安装工序均有严格的操作程序和规范，能有效保证工程进度和工程质量。根据工程的特点，结合ISO9001质量管理体系的要求，本公司实施一套完整的售后服务制度，能提供优质的售后服务。

主营业务

- 1、承建各种净化级别、工艺要求、平面布局的空调净化厂房。
- 2、设计、建造GMP制药厂净化厂房，协助通过GMP认证。
- 3、承建恒温恒湿净化厂房系统、空调机房。
- 4、承建舒适性能空调系统。
- 5、制作、安装洁净风淋室、层流罩、传递窗、净化工作台等净化产品。
- 6、净化空调系统工程咨询、调试、检测。



洁净室的定义

CLEANROOM DEFINITIONS

洁净室: 空气传播微粒受到控制且具有一个或一个以上清洁区的房间。

CLEANROOM: A room in which the concentration of airborne particles is controlled and which has one or more clean zones.

空气洁净室: 已经建造完成并可以投入使用的洁净室(设施).它具备所有有关的服务和功能。但是,在设施内没有操作人员操作的设备。

As-Built Cleanroom: A Cleanroom(facility) that is complete and ready for operation, with all services connected, and functional, but without equipment of operating personnel in the facility.

静态洁净室: 各种功能完备、设定安装妥当,可以按照设定使用或正在使用的洁净室(设施),但是设施内没有操作人员。

At-Rest Cleanroom: A Cleanroom(facility) that is complete with all services connected functioning and with equipment installed and operatable or operating, as specified, but without operating personnel in the facility.

动态洁净室: 处于正常使用的洁净室,服务功能完善,有设备和人员;如果需要,可从事正常的工作。

Operational Cleanroom: A Cleanroom(facility) in normal operation with services functioning and with equipment and personnel, if applicable, present and performing their normal work functions.

人员造成的污染 personnel Generated Contaminaton

皮肤: 人类每4天皮肤碎屑完全脱落一次(完全换肤)

人类释放10,000个皮肤碎屑/分钟(平均大小 $30 \times 60 \times 3 \mu\text{m}$)。

SKIN: Human beings completely esfoliate every 4 days (complete replacement of skin)

Humans release 10,000 skin flakes/minute (average size $30 \times 60 \times 3 \mu\text{m}$).

毛发: 人类经常连续脱落直径为 $50-100 \mu\text{m}$ 的毛发睫毛、眉毛、发胶、凝胶体。

HAIR: Human hair $50-100 \mu\text{m}$ in diameter continually being lost Eyelashes, EyeBrows, Hair Spray, Gel.

唾沫滴液: 含有钠、酶、盐、钾、氯化物和食物微粒。

SPITTLE DROPLETS: Contain Sodium, Euzymes Salts, Potassium, Chloride and Food Particles.

外用衣物: 微粒、纤维、硅石、纤维素、各种化学品、细菌。

STREET CLOTHING: Particles, Fibers, Silica, Cellulose, Various Chloride, Bacteria.

化妆品: 不应在洁净室使用可产生大量的微粒,清除被化妆品污染的衣服既困难,费用也很高。

COSMETICS: Should not be worn in the cleanroom, the number of particles generated as well as difficulty and cost to clean a cosmetic soiled garment

人类静止、坐下或站立将产生1,000,000 $\geq 0.3 \mu\text{m}$ 的微粒/分钟。

Human in motion will generate 1,000,000 $\geq 0.3 \mu\text{m}$ particles/minute

人类的头和身体运动时将产生1,000,000 $\geq 0.3 \mu\text{m}$ 的微粒/分钟。

Human with head and body in motion will generate 1,000,000 $\geq 0.3 \mu\text{m}$ particles/minute

人类以0.9mph (0.9mph)的速度行走将产生5,000,000 $\geq 0.3 \mu\text{m}$ 的微粒/分钟

Human walking at 0.9mph (0.9m/s) will generate 5,000,000 $\geq 0.3 \mu\text{m}$ particles/minute

气载微粒洁净度等级(ISO 14644-1)

ISO Classification Number	Maximum Concentration limits (Particles/M ³ of air) for particles equal to or larger than considered sizes shown below.					
	0.1 μm	0.2 μm	0.3 μm	0.5 μm	1 μm	5 μm
ISO1	10	2				
ISO2	100	24	10	4		
ISO3	1,000	237	102	35	8	
ISO4	10,000	2,370	1,020	352	83	
ISO5	100,000	23,700	10,200	3,520	832	29
ISO6	1,000,000	237,000	102,000	35,200	8,320	293
ISO7				352,000	83,200	2,930
ISO8				3,520,000	832,000	29,300
ISO9				35,200,000	8,320,000	293,000



过滤器
FILTERS



铝框高效过滤器
HEPA Filters



本公司目前主要的经营项目：

清洁度100-100,000级
 电子工厂无尘室设计、施工
 实验室整体规划设计、施工
 各种规格无菌无尘操作台、风淋室、传递窗
 初效、中效、高效过滤器
 防尘、防腐、抗静电、无缝地面

Business scope: design and construction of
 cleanroom class 100-100,000 for electronic
 factory
 Design and construction of laboratory
 Various germ free and dust free operation desk,
 air shower and pass box.
 Inferior, Middle and HEPA filter
 Dustproof, anti-corrosive, anti-static seamless
 floor



净化工程连接件

净化设备

CLEANROOM EQUIPMENT



各种净化房设备、仪器等,如风淋室,传递窗,压差表。

Cleanroom equipment, instruments such as airshow, pass box, gauge.

导电及防静电PVC地板

在今天最新的迅速发展的工业之后建立起对相关污染的衡量标准必需快速而适当的行动。近来，迅速变化的电子、信息、通讯工作促使工业和生活方式的进一步结合和理智化。然而要充分利用这一趋势，需要对应用环境的充分考虑，就是说需要一种控制静电影响的方法，静电影响的后果是非常严重的，当中许多的事故包括在半导体生产线中对集成电路的破坏。从产生故障的计算机丢失宝贵的数据、疏忽引起的燃烧和爆炸，和在医院及手术后引起的传染已经被证明是由静电造成的。

当两个带有静电电荷的物体互相接触或摩擦时，电子移动使接触时平衡的正负极充电，与这些点的直接接触活动将引起瞬间放电现象从而而引起对这两种有相反电极的物体的损坏、污染或故障，因此，UL和NFPA（美国国家防火协会）都强烈推荐使用防静电地板，X&Y PVC地板是一种能全部满足上述要求和现代工业和生活的高新技术材料。

An establishment of measures against pollution in the wake of fast advancement of up-to-date Industries necessitates speedy and appropriate actions. Recently, the fast revolving electronics and information/communication industries is prompting the extreme integration and intellectualization of industries and life styles. Full utilization of this facility, however, requires sufficient consideration for application environment, so to speak, a way to check electrostatic influence. The effects of electrostatic influence is rather serious, and many of the incidents including damage to super integrated circuits in semiconductor production lines and loss of valuable data from malfunction of computer as well as inadvertent ignition of inflammable and explosions and contagion in hospital and post operation have been proven result of electrostatic work. When two objects with electrostatic charge come into contact or friction, electron movement occurs with electrification to positive and negative poles, which are stationary at the points of mutual contact. A direct action against these points will cause instantaneous electric discharge, resulting into a damage to products or, pollution or malfunction from contact of two objects with opposing electric poles. Because of this, both UL and NFPA strongly recommend use of conductive floor. X&Y Vinyl Tile is a high tech material that fully satisfies their specification requirements and need for the environments of up-to-date industries and living.

新豐行

性能	测试方法	测试结果	性能	测试方法	测试结果
厚度	EN428	2.0mm, 2.5mm, 3.0mm	绝缘系数	VDE0100	大于100KΩ
尺寸	EN426	600mm×600mm	导电系数	IEC61340-4-1/EN1081	小于100MΩ
阻燃等级	DIN4102	B1	综合阻值(鞋/地板)	IEC61340-5-1	小于35MΩ
散发量	Nordtest NT Build358/1 Cost Report no8/2	M14周后TVOC<200μg /平方米小时	绝热系数		0.25W/mk
			起电电压	ESD STM 97.2-1999	小于10V
隔音系数	ISO&DIN	△Lw大约2dB	体积电阻	GJB3007-97(10 ⁸ -10 ⁹ Ω)	10 ⁷ -10 ⁸ Ω
结构稳性	En434	变形小于0.1%	静电电压衰减期	GJB2605-1996 (±5000V-±50V, 小于2S)	平均0.9S
压力残痕	EN433, 2.5小时后	小于0.05毫米	磨耗量	GB4085-83, 不大于0.020g/cm ²	平均0.0043g/cm ²
脚轮碾压	En425	合适, 0毫米	燃烧性能	GB460984FV-0(小于10S)	平均2.42S
耐磨性能	EN660Pt2	T组别, 小于2.0立方毫米	起电电压	SJ/T10649-1996 V <100V	小于100V
接缝强度	En684	大于240N/50mmΩ			

导电及防静电PVC地板

CONDUCTIVE & STATIC DISSIPATIVE PVC TILE

应用

在各种半导体的生产，装配和检验过程
 在用于电气和电子产品的生产，装配和实验过程
 微机房，实验室
 净化房，电子交换室，通讯室
 医院的手术室及制药工业设施
 生产易爆产品的工厂，经销易燃气体的商店
 智能化办公室，公共设施
 其他有静电影响的地方

Application

Producton,assembling and inspection process on various semiconductors Production,assembling and laboratory application for electric and electronic products, Computer rooms,laboratories, Clean rooms,electronic exchange office,communication office, Operation rooms in hospital, pharmaceutical facilities,Explosives manufacturing plants, dealers of inflammable gases,Intelligent offices,public facilities, Other places where electrostatic influence is expected

美国联邦标准FS209的空气洁净度级别

级别名称		0.1um	0.2um	0.3um	0.5um	5um
		容积单位	容积单位	容积单位	容积单位	容积单位
国际单位	英制单位	(m3) (ft3)	(m3) (ft3)	(m3) (ft3)	(m3) (ft3)	(m3) (ft3)
M1.5	1	1240 35.3	265 7.50	106 3.00	3.53 1.0
M2.5	10	1240 350	2650 75.0	1060 30.00	35.3 10
M3.5	100	26500 750	10600 300	353 100
M4.5	1000	3530 1000	247 7.00
M5.5	10000	35300 10000	2470 70.0
M6.5	100000	353000 100000	24700 700

空气洁净度是指洁净环境中空气含尘（颗粒）量多少的程度，含尘浓度高则洁净度低，含尘浓度低则洁净度高。空气洁净度本身是无量纲的。
 但是，空气洁净的高低可用空气洁净度级别来区分，空气洁净度级别则以每立方米空气中的最大允许微粒数来确定。

中国药品生产洁净室(区)空气洁净标准

洁净度级别 CLEAN CLASS	尘粒最大允许数/立方米 Maximum permit Quantity of particles per cubic meter		尘粒最大允许数 Maximum permit Quantity of particles microorganism	
	≥5um	≥5um	浮游菌/立方米 Quantity of suspended bacteria per cubic meter	沉降菌/皿 Quantity bacteria per plate
100	3,500	0	5	1
10,000	350,000	2,000	100	3
100,000	3,500,000	20,000	500	10
300,000	10,500,000	60,000	NA	15

导电及防静电PVC地板



特性

- 优良的导电性能
 - 表面和接地电阻 (2.5 × 10⁴ ~ 1.0 × 10⁹ 欧)
 - 导电粒子构成特殊的网孔结构, 具有非永久的寿命, 它们将完全控制静电
- 良好的设计
 - 优质的色调和纹理, 使之与自然的大理石类似, 符合审美观念
- 良好的耐用性
 - 经久耐用, 防水防化学腐蚀
- 无尘的环境
 - 地板的表面有低静电电压, 无尘, 使保持清洁成为可能, 也容易擦去污渍
- 良好的承重性能
 - 能够承受较大的压力, 包括各种机器, 装载的车子, 车床等等
- 优异的防火功能
 - PVC地板具有防火的性能, 它们有助于防止火灾的扩散
- 突出的性能
 - 由高质量的材料制成, 令人踩踏舒适, 因为它的柔韧性而不会因为冲撞而轻易地破损。厚度也容易控制, 而且不会脱离地面。

Features

- Excellent Conductivity
 - Surface and grounding electric resistance (2.5 × 10⁴ ~ 1.0 × 10⁹ Ω)
 - Conductive particles formed in special mesh structure have semipermanent service life.They will fully shut down static electricity
- Good Design
 - It bears quality tone and a texture resembling natural marble with aesthetic touch.
- Good Durability
 - It excels in durability and is water resistant and chemical resistant.
- Dust Free Environment
 - The surface of tile floor has low level of electrostatic potential with free of dust accumulation,making it possible to keep clean and also easy to remove stains.
- Good load Bearing Capacity
 - It excels in withstanding heavy loads to include various machines,carts,beds.etc.
- Excellent Resistance To Fire
 - Being fire-resistant PVC tiles,they help prevent spread of fire.
- Outstanding Properties
 - Made of high quality material,it provides comfort of stepping on,and because of its flexible nature it does not break easily from an impact.
 - Control of thickness is easy and it does not come undone from the floor.

导电性能

项目	测试标准	导电型	防静电耗散型
表面到地面电阻(Ω)	UL-779	2.5×10 ⁴ ~1×10 ⁶	1×10 ⁵ ~1×10 ⁹
表面到表面电阻(Ω)	UL-779	2.5×10 ⁴ ~1×10 ⁶	1×10 ⁵ ~1×10 ⁹
5kv静电消散时间	MIL-B-81705C	<0.25	
穿导电鞋的静电产生量	AATCC-134	<100	

化学品/污物电阻

化学品	导电性能/耗散性	污染物	导电性能/耗散性
5%醋酸	无影响	大豆油	无影响
5%盐酸	无影响	煤油	无影响
5%硝酸	无影响	水泥浆	无影响
5%氨溶液	无影响	牛奶	无影响
95%酒精	无影响	酱	无影响

测试标准:ASTM-F-925

Electrical Properties

Items	Test Method	Conductive	Dissipative
STG (Surface To Ground) Resistance(Ω)	UL-779	2.5×10 ⁴ ~1×10 ⁶	1×10 ⁵ ~1×10 ⁹
STS (Surface To Surface) Resistance(Ω)	UL-779	2.5×10 ⁴ ~1×10 ⁶	1×10 ⁵ ~1×10 ⁹
Static 5kv Decay Time(sec)	MIL-B-81705C	<0.25	
Static Generation (volts) with conductive footwear	AATCC-134	<100	

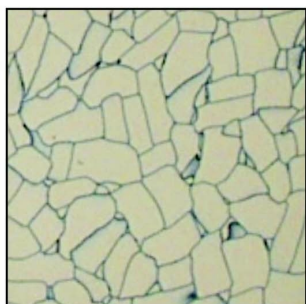
Chemical/Contaminant Resistance

Chemical	Conductive Dissipative	Contaminant	Conductive Dissipative
5%Acetic Acid	No Defect	Soybean oil	No Defect
5%Hydrochloric Acid	No Defect	Kerosene	No Defect
5%Nitric Acid	No Defect	Cement Paste	No Defect
5%Ammonia Solution	No Defect	Milk	No Defect
95%Ethyl Alcohol	No Defect	Soy Sauce	No Defect

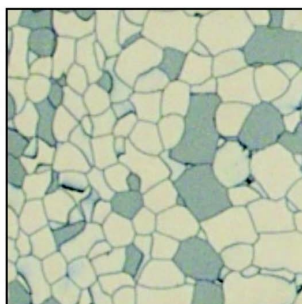
TESE METHOD:ASTM-F-925

CONDUCTIVE & STATIC DISSIPATIVE PVC TILE

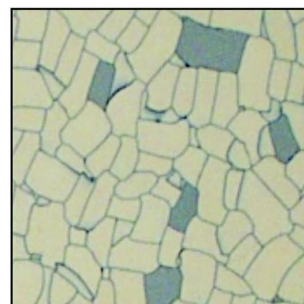
产品样板 CONDUCTIVE & STATIC DISSIPATIVE PVC TILE



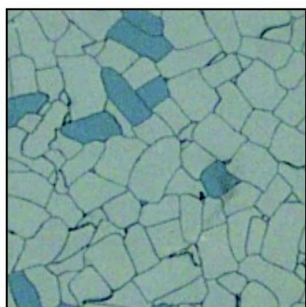
NG - 150202



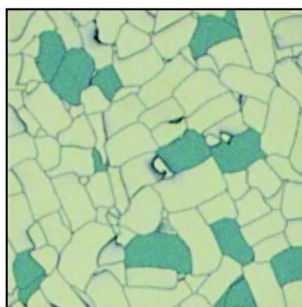
NG - 150203



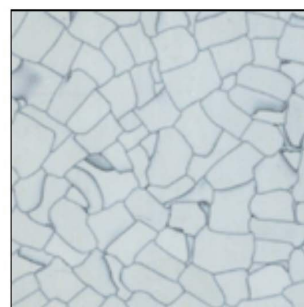
NG - 150204



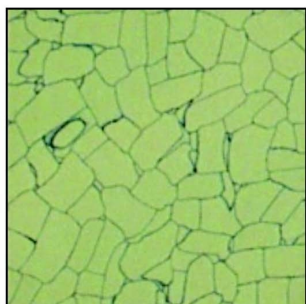
NG - 150205



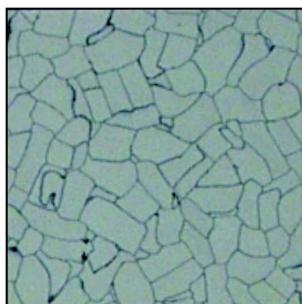
NG - 150206



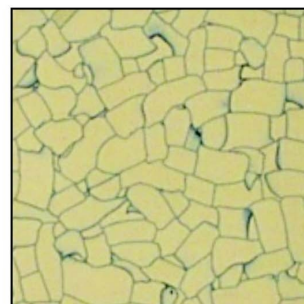
NG - 150207



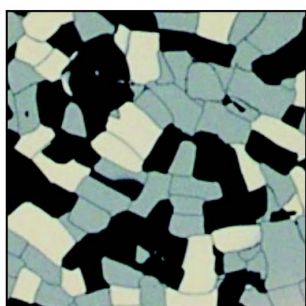
NG - 150208



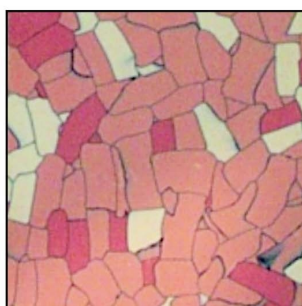
NG - 150209



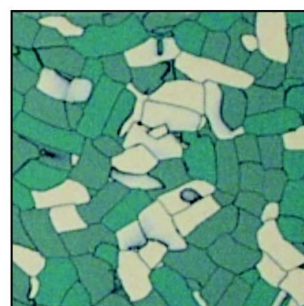
NG - 150210



NG - 150211



NG - 150212



NG - 150213

(颜色与实物可能有偏差, 图片仅供参考 the colors are for reference only)

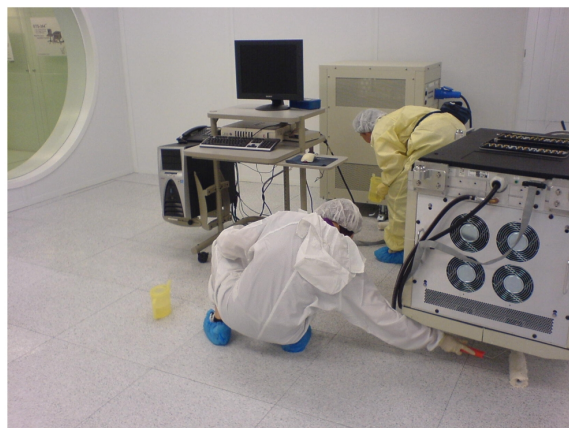
CONDUCTIVE & STATIC DISSIPATIVE PVC TILE

安装程序 Installation Procedure

- 1、地面必须干燥平整，无其它杂物；
(备注：必须保持地面平整，长3米的地面凹凸最大不超过3mm)
- 2、混凝土地面必须平整，在将粘合剂涂到陶瓷和木地板之前，任何洞孔、裂痕、沟等必须完全地填好；
- 3、PVC地板和粘合剂必须预先在常温25度下在现场储存至少24个小时再开始安装，在完全施工结束后至少在常温25度下保持48个小时；
- 4、同一批次的PVC地板作为备用，以使用于工程的修补或重新施工；
- 5、强烈建议所用的粘合剂必须被本公司同意，同时在使用前必须充分混合；
 - 粘合剂刮抹刀的尺寸，(凹槽距离1.0mm, 凹槽宽度2.0mm, 凹槽高度2.0mm)
 - 使用合适尺寸的刮刀，把导电粘合剂均匀地抹在地板上；
 - 为确保良好的粘合效果，保持露空时间(15分钟)，要在可工作期限内结束施工(1小时)；
- 6、在粘合剂渐渐变干过程中，当施工从中间的标准行向外进行时，PVC地板要压平；
- 7、焊接时，在PVC地板铺下及粘合剂变硬后，剩下48小时，在地板连接处开出大约地板2/3厚的V型槽；
- 8、用2-3mm直径的PVC焊接杆，由焊接工焊接；
- 9、任何在焊接区突出的部分，要用刀切去以便与其它区域一样平整；
- 10、在完成以上工序的24小时后，完工的地面要用重80公斤的滚筒均匀地碾压以使粘连和连接的效果更好。

- 1、The floor must be dry, free of any alien materials and level.
(reference: should maintain a level surface over a length of 3m with a maximum offset of about 3mm)
- 2、Concrete floor must be smoothed and when copper tapes are to applied to ceramic tiles and wooden floor, any holes, cracks, gaps, etc, should be clogged with filler.
- 3、Tile and adhesive should be stored on the under normal temperature (25°C) for at least 24 hours prior to beginning installation and shall be stored under normal temperature (25°C) for at least 48 hours after completion of work.
- 4、Tile of same LOT should be used for repeated process.
- 5、It is strongly recommended to use adhesive approved by our company, and a thorough mixing is required before use
 - Size of adhesive applying spatula (groove intervals: 1.0mm, groove width 2.0mm, groove height: 2.0mm).
 - Using appropriate size spatula, apply conductive adhesive evenly over tile floor.
 - To ensure good cohesion, be sure to keep open time (15 minutes) and finish work within workable period of time (1 hour).
- 6、Upon elapse of drying time for adhesive, tiles are go be pressed while working toward outside from the middle of tile alignment line.
- 7、For welding, V-shape groove in the depth of about 2/3 tile thickness will be made along the joints when 48 hours have left following the laying work of tiles and adhesive has hardened.
- 8、Using PVC welding rod of 2-3mm diameter, welding is performed with welder.
- 9、Any protruding parts in welded area will be cut off with knife to become flush with adjacent areas.
- 10、When additional 24 hours have lapsed following the completion of the above processes, the finished surface will be cleaned off with neutral detergent using a sponge.
- 11、Upon completion of laying processes, entire area will evenly pressed with a roller weighing 80kg for perfect adhesiveness and seating.

CLEANROOM CLEANING AND WAX



新豐行

Our Mission is to provide a professional and quality cleaning service for the companies requiring critical environment

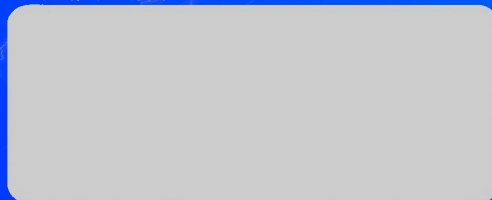
我们的任务是为需要绝对洁净环境的公司提供优质和专业清洁的服务。

地址:旺角彌敦道610號荷李活商業中心618室
ADD: Room 618, Hollywood Plaza, 610 Nathan Road, Mong Kok,
Kowloon
電話 (Tel) : (852)29614615
傳真(Fax) : (852)34467122 / (852)28932300 / (852)31578456
電子郵件 (Email) : info@newgrowth.com.hk

分公司地址:屯門業旺路8號聯昌中心10樓4室
ADD: Flat 4, 10/F, Luen Cheong Can Centre,
8 Yip Wong Road, Tuen Mun, N.T., Hong Kong



授權經銷營:



新豐行
NEW GROWTH CO.

www.newgrowth.com.hk

本產品介紹的產品樣式、顏色與實物如有偏差,本公司擁有最終解釋權
本產品有權對上述產品進行更新、修改而無須事先通知
(版權所有、不得翻印、違者必究)